

Regulating between public and private transport

Innsbruck, 25 June 2015

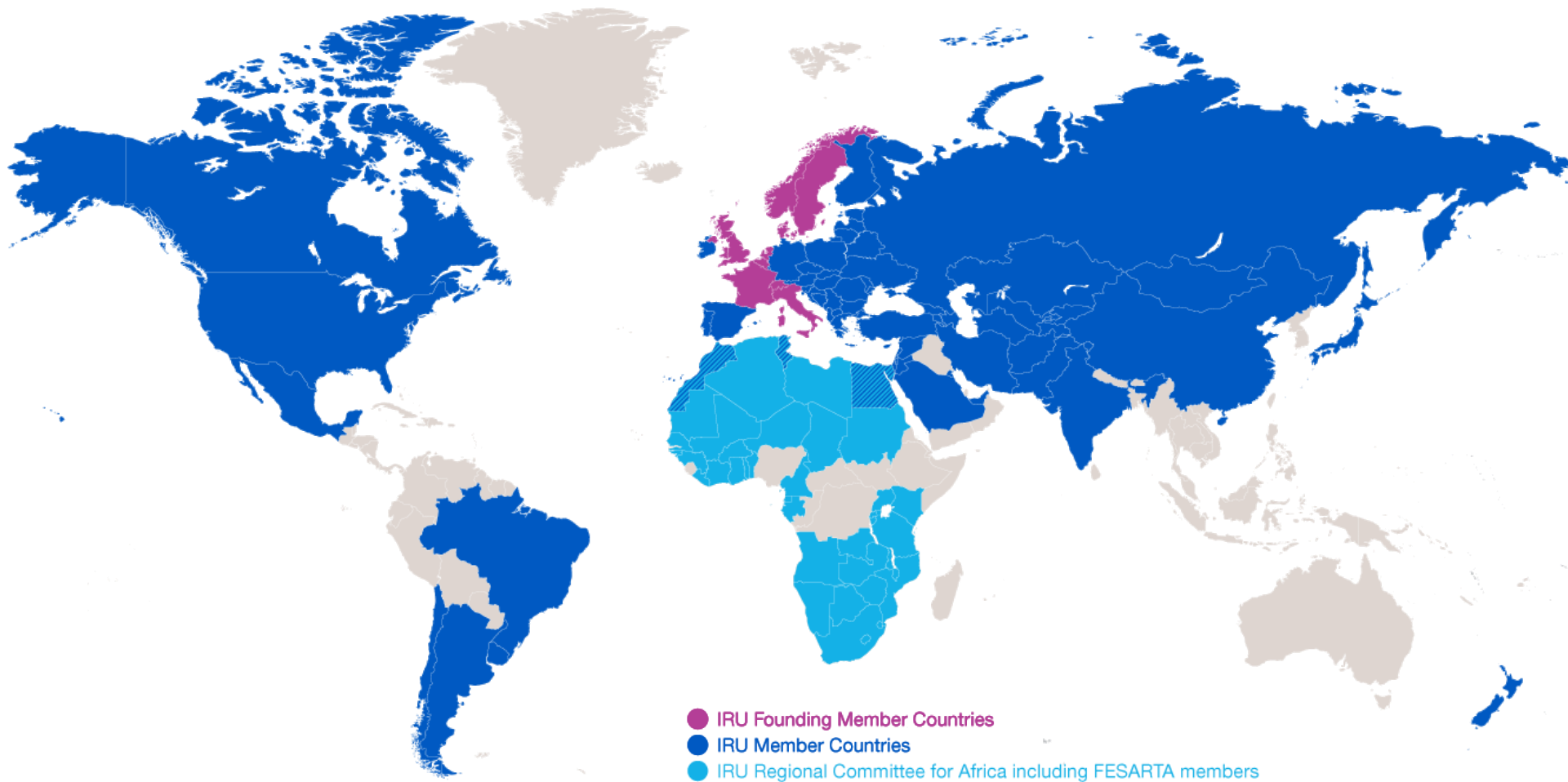


Sonila Metushi
Policy Officer

IRU Evolution of IRU Membership

1948: 8 Founding Member Countries

2015: present in over 100 countries



2005



2010





LEADING INNOVATION

GLOBAL TAXI NETWORK



A network of taxi industry federations and taxi apps. Partners **certified** by federations by meeting a list of predefined GTN quality criteria

Who can become a GTN Member?



MAGYAR KÖZÚTI
FUVAROZÓK EGYESÜLETE



G. T. L.



SVENSKA

Any Taxi trade association who is a Member or Associate Member of the IRU
Ensuring representation of the legal and professional taxi business



UN

taxi-Mietwagen



ASTAG+

A.E.B.T.F.





Any taxi smartphone application service provider is entitled to apply to become a GTN Partner

To be eligible, the app must meet a predefined set of GTN service quality conditions, and sign the GTN's Service Quality Commitment Charter





GTN Evaluation Committee

GTN Advisory Committee





Taxi Deutschl.

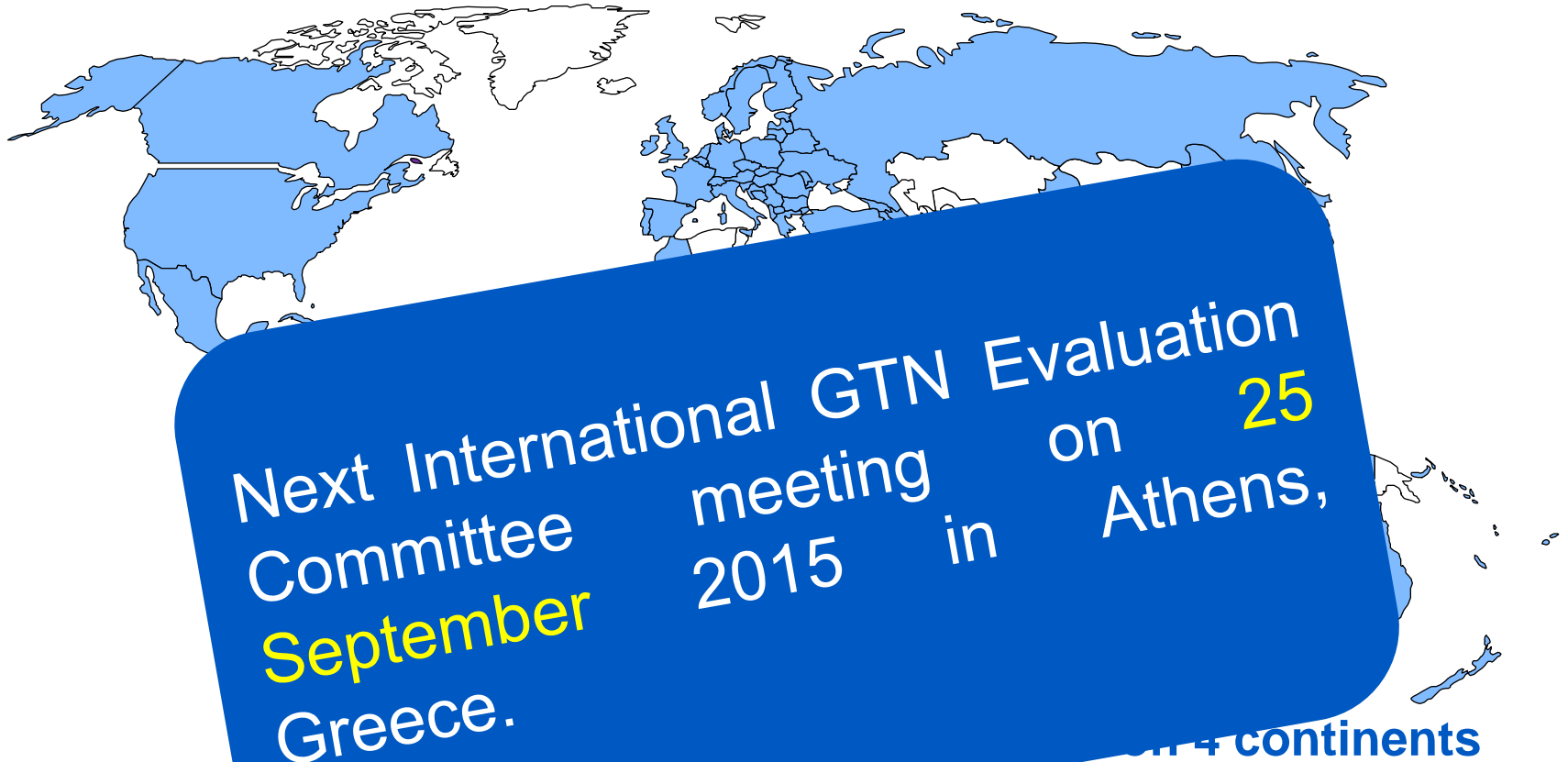


10 Partners

250,000 taxis

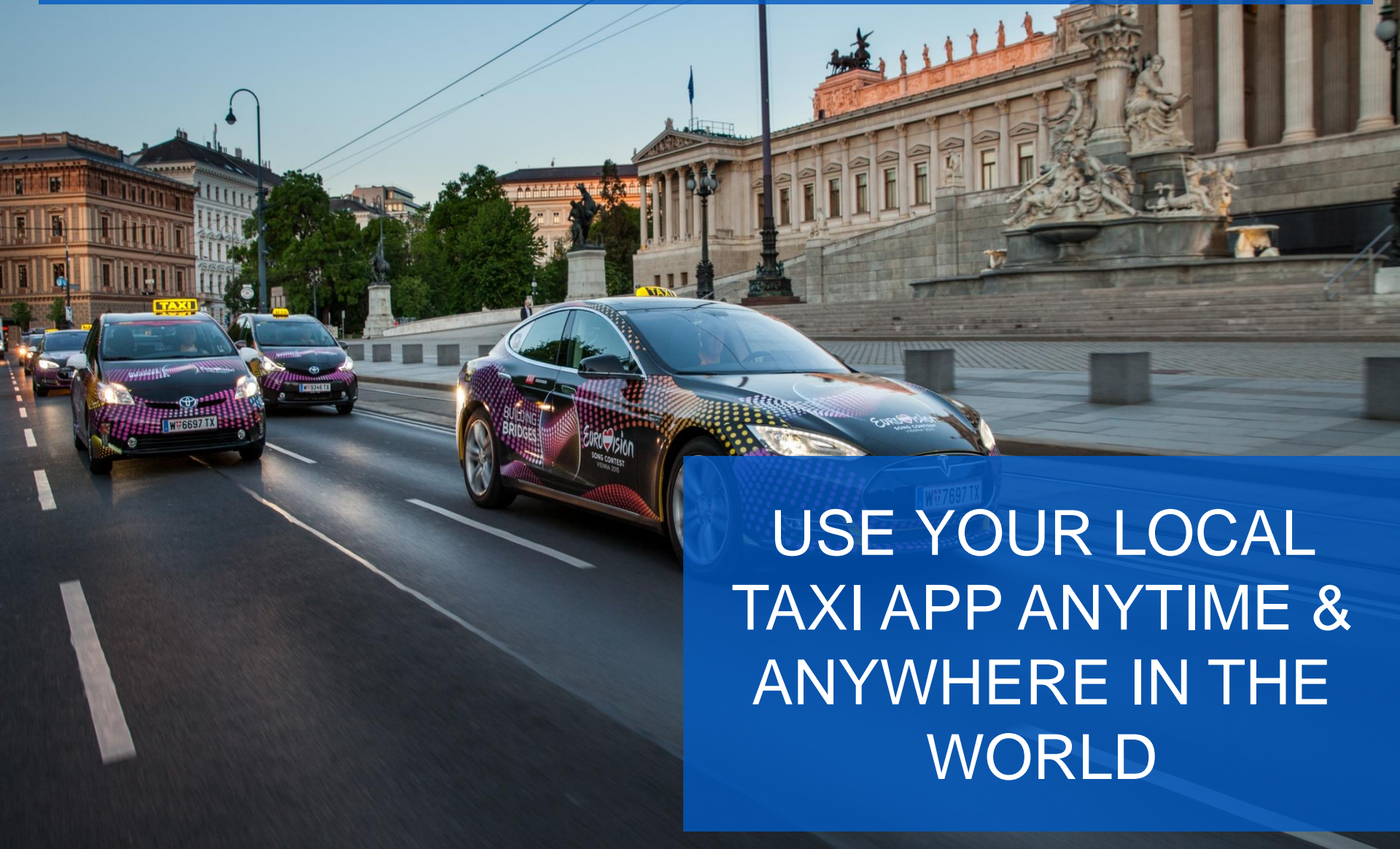
+30,000 taxis/month

Beginning of networking/roaming between partners



Advanced networking between GTN
Partners

HIGH QUALITY AND SAFE SERVICE



USE YOUR LOCAL
TAXI APP ANYTIME &
ANYWHERE IN THE
WORLD

CONSUMER RIGHTS

A woman with dark hair, wearing a dark blazer over a light-colored top, is standing in a parking lot. She is holding a mobile phone to her ear with her right hand and has her left hand raised in the air. The background shows several cars parked in a lot, with a blurred orange pillar on the right side.

SAFETY & QUALITY

