

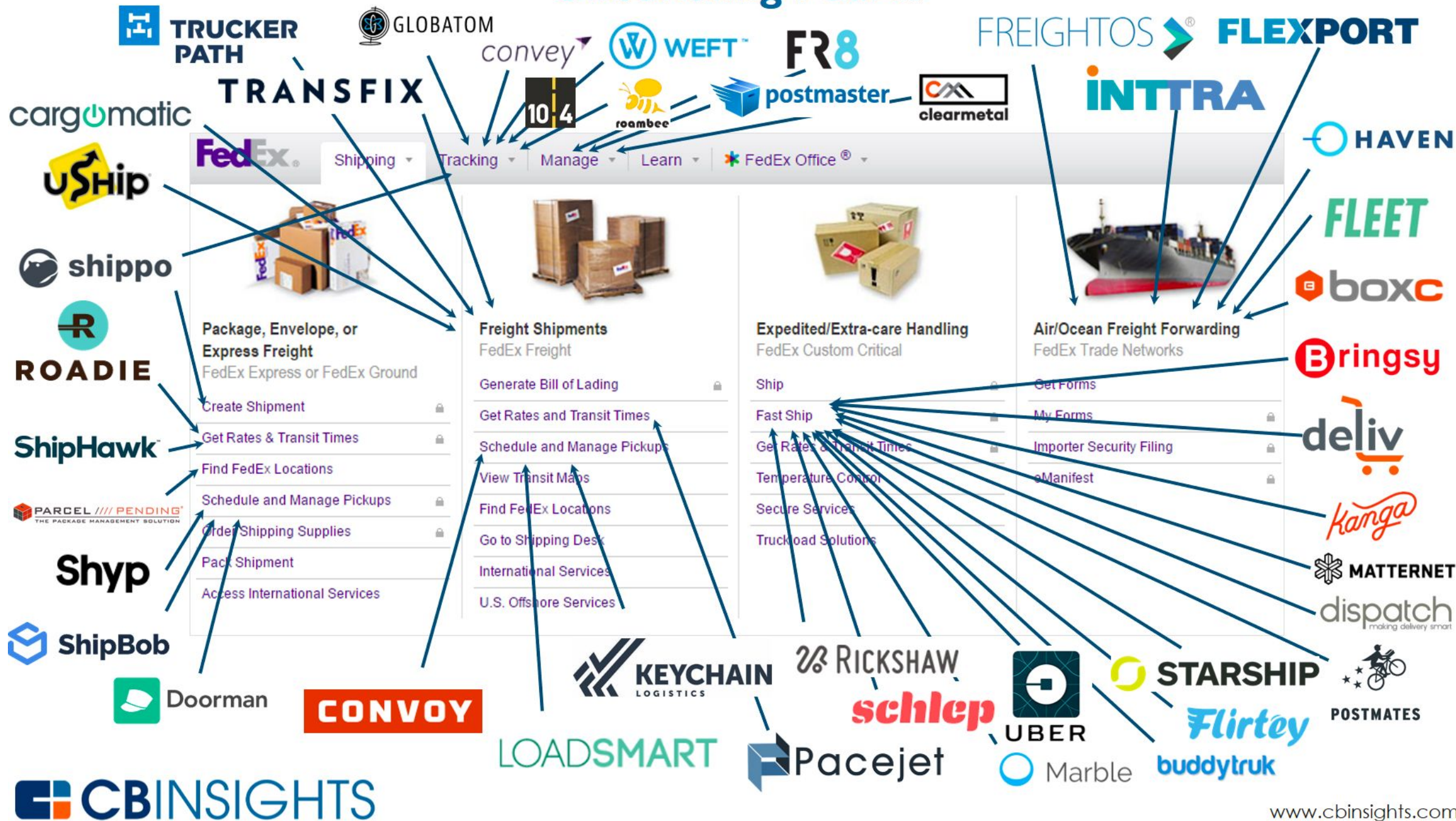
NUMA DataCity @ wocomoco

Experiences from our open innovation program for sustainable cities



Startups – Threat or Opportunity?

Unbundling FedEx



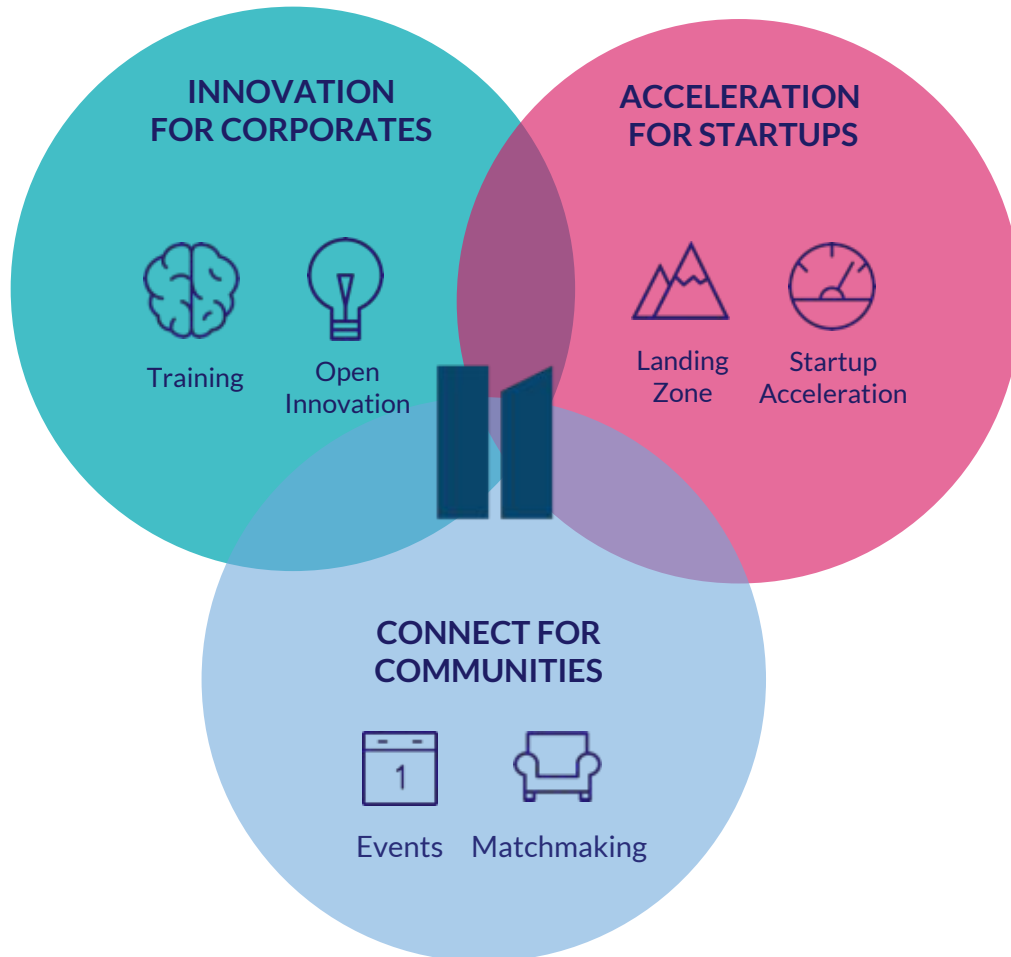
Major Differences exist...



-
- **Stability**
 - **Know-how**
 - **Resources**
 - **Client-relationships**
 - **Credibility**

- **Drive & Velocity**
- **Agility**
- **Latest technology**
- **Failure-culture**
- **Sexy**

... but both sides can benefit from each other!



**Our programs and trainings
are always at the intersection of
startups and corporates.**

We staff programs with:

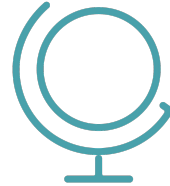
*Startup Entrepreneurs
Digital Thought Leaders
Innovation Executives*

17 years of Entrepreneurship & Innovation



NUMA in Paris

2000: Entrepreneurs Association
2008: 1st Co-working space in France
2011: 1st Accelerator (largest) in France
2013: Merge all above and launch NUMA
2013: Start Corporate Innovation Programs
2015: Initiation global activities



NUMA globally

Mexico City
New York City
Barcelona
Casablanca
Bengaluru
Moscow



NUMA in Berlin

2017: JV w/ local partner berlinplusone:
4 startups founded, 50+ startups coached,
20+ corporate innovation & training projects

→ **Pooling resources, know-how and network to form NUMA Berlin chapter**



Acceleration and Scaling for Startups



OPEN FOR APPLICATION :

PARIS Scale-Hub	12 day(s) left
MEXICO Season 16	73 day(s) left
BARCELONA Season 2	95 day(s) left
NEW YORK Season 1	103 day(s) left
BENGALURU Season 3	SOON
PARIS Acceleration Season 12	SOON
CASABLANCA Season 4	SOON
MOSCOW Season 3	SOON
BERLIN Season 1	SOON

314

startups
accelerated

79%

still active

9

programs

1M€

fundings in average
per startups

Landing Zones in:

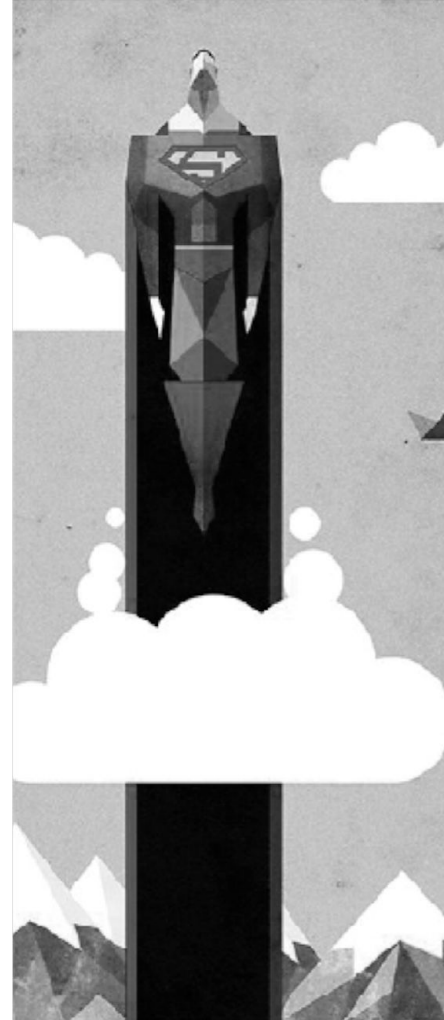
Paris
NYC
Berlin ...

**NUMA EMPOWERS MISSION DRIVEN
TECH ENTREPRENEURS & INNOVATORS
TO SOLVE THE GLOBAL PROBLEMS OF 2030.**

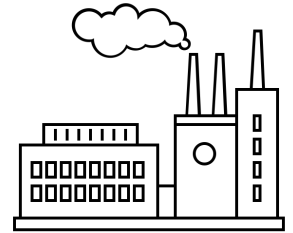
*Sectors: Energy | Mobility & Logistics | Health | Water | Education | Food | Transparency & Security
Shaping Digital & Social Technologies: AI | Blockchain | VR | New Work & Organizations*



Sustainability is a Major Issue for Cities



80%
of the CO2
emissions is
produced by cities*



Congestion can
cost
2-4%
of national GDP**

75%
of the energy
produced is
consumed by cities*



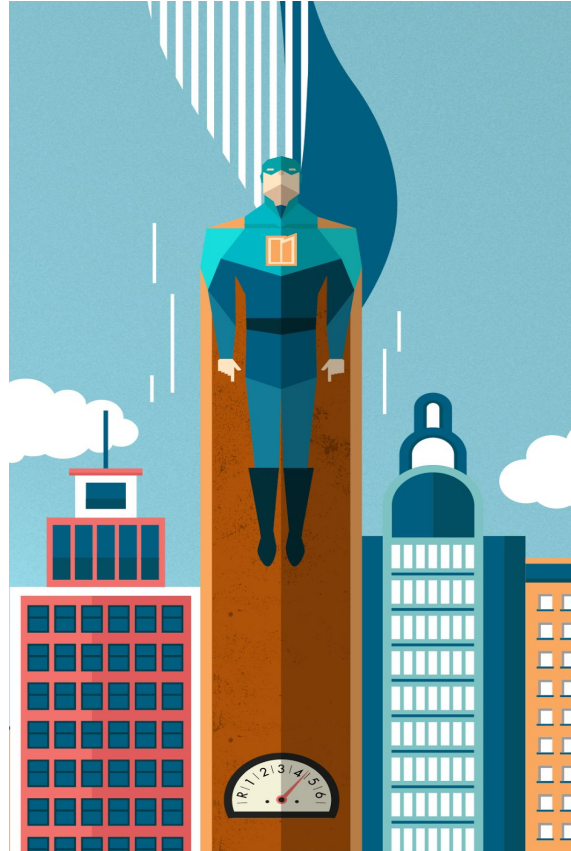
Berlin drivers are spending
62 hrs / year
looking for a parking spot***

What we do in Berlin



Training

Tailor-made



Innovation



DataCity

NUMA-initiated

DataCity: Open Innovation for Sustainable Cities

DataCity aims at solving urban issues, in sectors such as...



ENERGY



BUILDING & HOUSING



MOBILITY & LOGISTICS

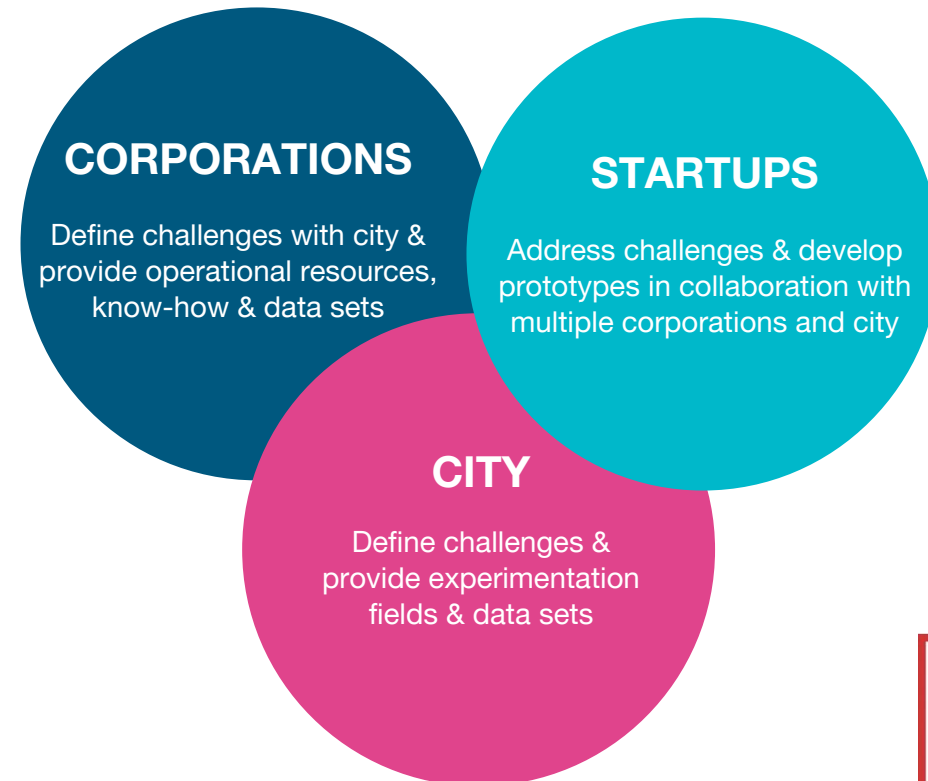


WASTE & WATER MANAGEMENT



PUBLIC SAFETY & eGOVERNANCE

...using data sets through the collaboration between startups, corporations and local authorities.



Smart City Berlin
The future starts here.

**Cities to be confirmed for 2017: Berlin, Paris, Barcelona, London, Bangalore, Casablanca, Mexico City, New York City, and more...

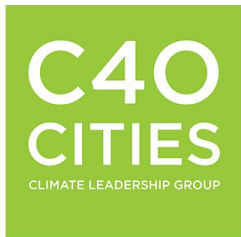
9 Months: From Challenge to Prototype



DataCity Expanding in the Global NUMA Network



Global Partnership



Completed Editions


2015-16: Paris 1st edition

2016-17: Paris 2nd & Casablanca 1st edition

Planned DataCity Programs in 2017/2018

Berlin, Paris, London, Bangalore, Mexico City, NYC and more

 NUMA Offices

 Completed DataCity Editions

Previous challenge in Paris: Predicting waste collection times

Challenge: In Paris for sanitary reasons, waste should not stay more than 75 minutes on the street, but current collection intervals are over 4 hours long, making it difficult to conform to rules.

Outcome: Based on sensor-data from waste-bins a machine learning model was trained to forecast collection-times within a 2-hour window, the web-platform monservicedechets.com and a notification-system for residents was created

Data used: 300.000 waste collection events from sensor-data



Corporate Partner:



Startup Partner:



City Involvement:



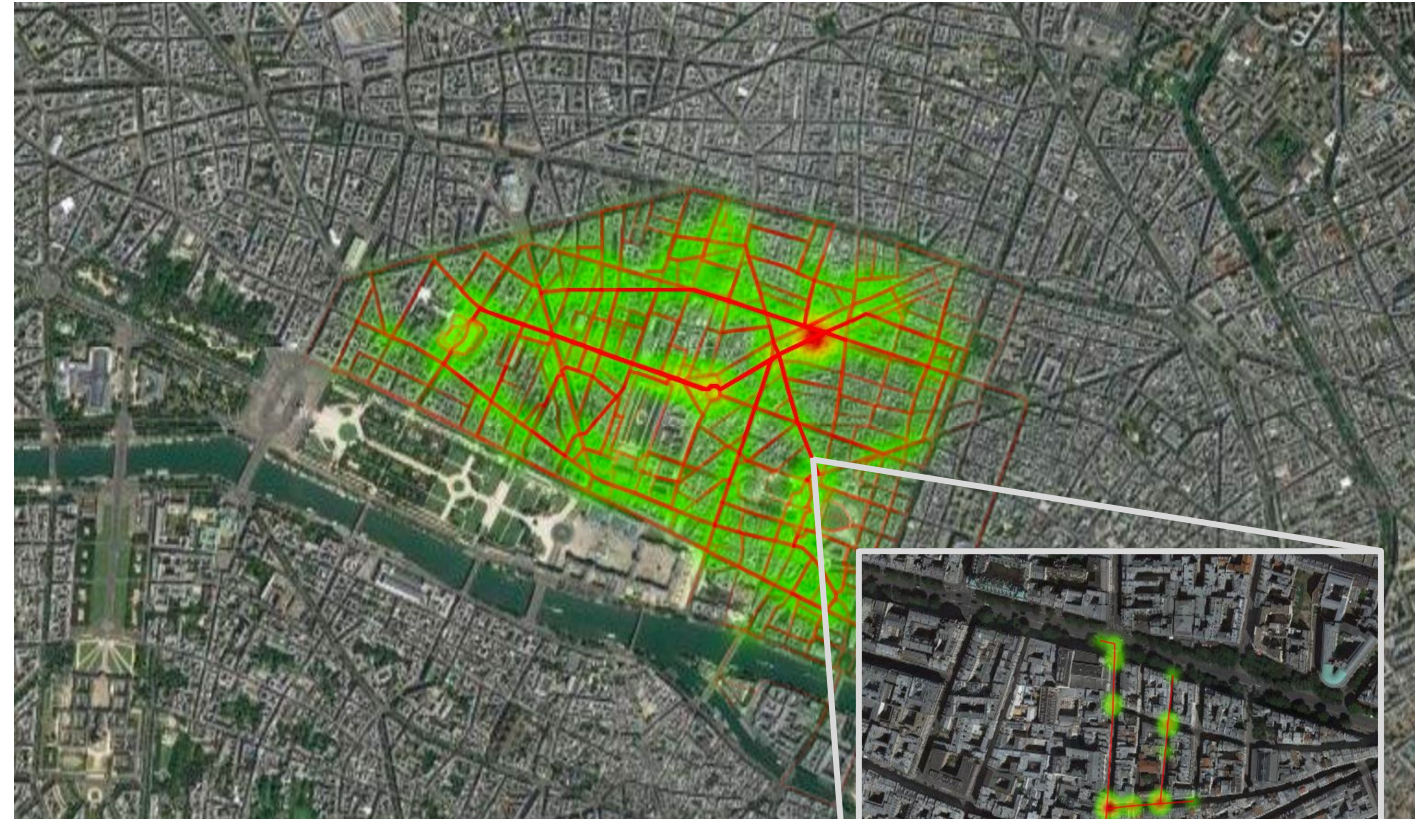


Previous challenge in Paris: Estimating impact of urban planning on logistics

Challenge: Paris plans to close parts of the city to non-green modes of transportation, including delivery-trucks. City authorities and la Poste wanted to evaluate the impact of different policies on traffic, emissions and parcel delivery-cost.

Outcome: Several scenarios were defined and effects of policies were simulated, discussions around the implementation are ongoing.

Data used: 3 months of historical data from La Poste including delivery routes, types of customers, parcels and vehicles



Corporate Partners:



Startup Partner:

City Involvement:



We're Currently Launching in Berlin



ENERGY



BUILDING & HOUSING



MOBILITY & LOGISTICS



WASTE & WATER MANAGEMENT



PUBLIC SAFETY & eGOVERNANCE



Thank you!

Email: max.t@numa.co

Web: berlin.numa.co

datacity.numa.co

Facebook: facebook.com/NUMABerlin

Twitter: twitter.com/NUMA_Berlin

Business address: NUMA GmbH | Zionskirchstraße 7 | 10119 Berlin

Managing Director: Darius Moeini | **Board:** Marie Vorgan Le Barzic

