



FAIRPARK

INSUFFICIENT PARKING
SPACE

EXCEPTIONS



WHO IS ALLOWED ON THE
PRIORITY LANE

FEELING OF INJUSTICE

MOBILITY MANAGEMENT | |
mobilid3e



FP **FairPark**
smart mobility manager



INTEGRATED MOBILITY MANAGEMENT TOOL



PARKING MANAGEMENT



FINANCIAL
MANAGEMENT





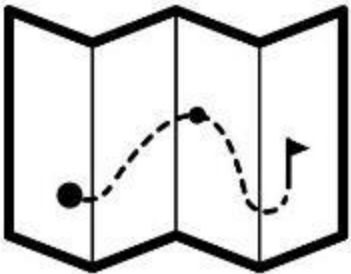




CARPPOOL MATCHING

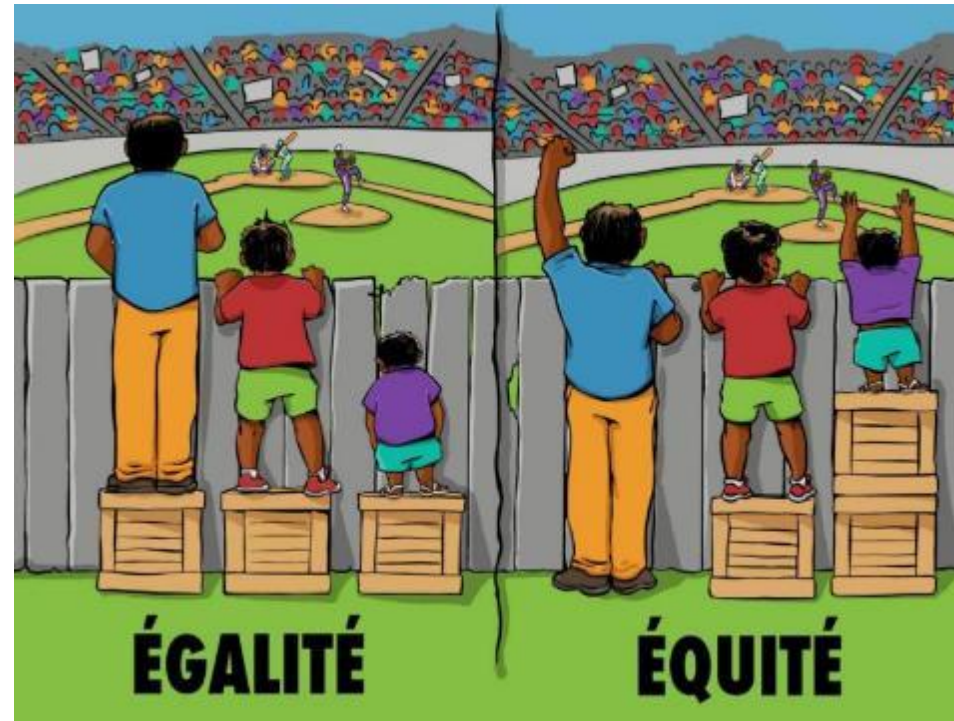
OBJECTIVES

- Equal distribution and efficient management of parking spaces
- Optimizing occupancy of parking spaces
- Reducing mobility costs

FUNCTIONALITIES

<p>ALLOCATION OF PERMANENT PARKING SPACES</p> 	<p>MANAGEMENT OF OCCASIONAL PARKING</p> 	<p>MANAGEMENT OF MOBILITY SERVICES</p> 	<p>MANAGEMENT OF ALL FINANCIAL FLOWS</p> 
<p>ROUTE CALCULATION</p> 	<p>ACCESS CONTROL</p> 	<p>CARPOOL MANAGEMENT</p> 	

PRINCIPLE



↓
Parking Solution
“First In – First served”

↓
FP FairPark
smart mobility manager

ALLOCATION OF PERMANENT PARKING SPACES

- Choice of criteria of allocation : 3 families of criteria (or more)
- Free definition of number of points by each criterion (inclusive or weighted)

ACCESSIBILITY TO THE SITE

Access time
Compared times
Type of mobility
Exclusion zone



CORPORATE

Hierarchy
Seniority
Function



STAFF

Disabled mobility
Depending child



ALLOCATION OF PERMANENT PARKING SPACES

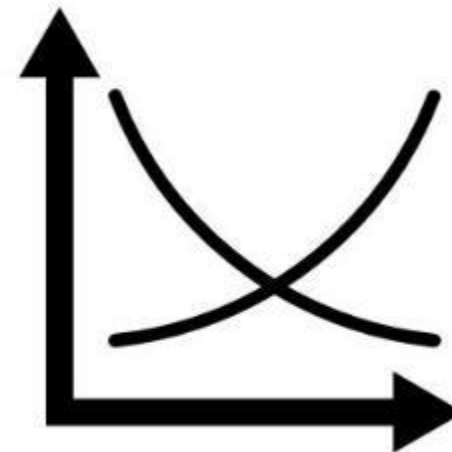
→ Annual **demand** parking place

→ Definition of the offer

→ #  Permanent + #  Occasional

→ Management by zone or by parking space

→ Comparison of parking space supply and demand



Employees who earn the most points are entitled to a permanent parking space for one year

EXAMPLE

→ Definition of criteria of allocation

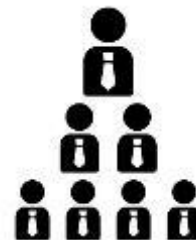
Accessibility to the site

Access time by car more than 60 min	
Compared time more than 45 min	
Type de mobility – carpooling	



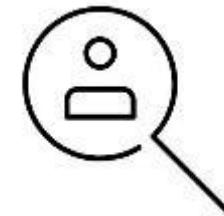
Corporate

Hierarchy	
Seniority	



Staff

Depending child – 12 ans	
Person with reduced mobility	



EXAMPLE

→ Definition of the points per criteria

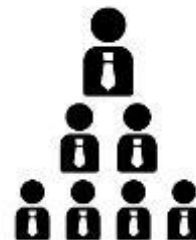
Accessibility to the site

Access time by car more than 60 min	20.000
Compared time more than 45 min	15.000
Type de mobility – carpooling	100.000



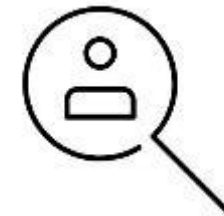
Corporate

Hierarchy	0
Seniority	0

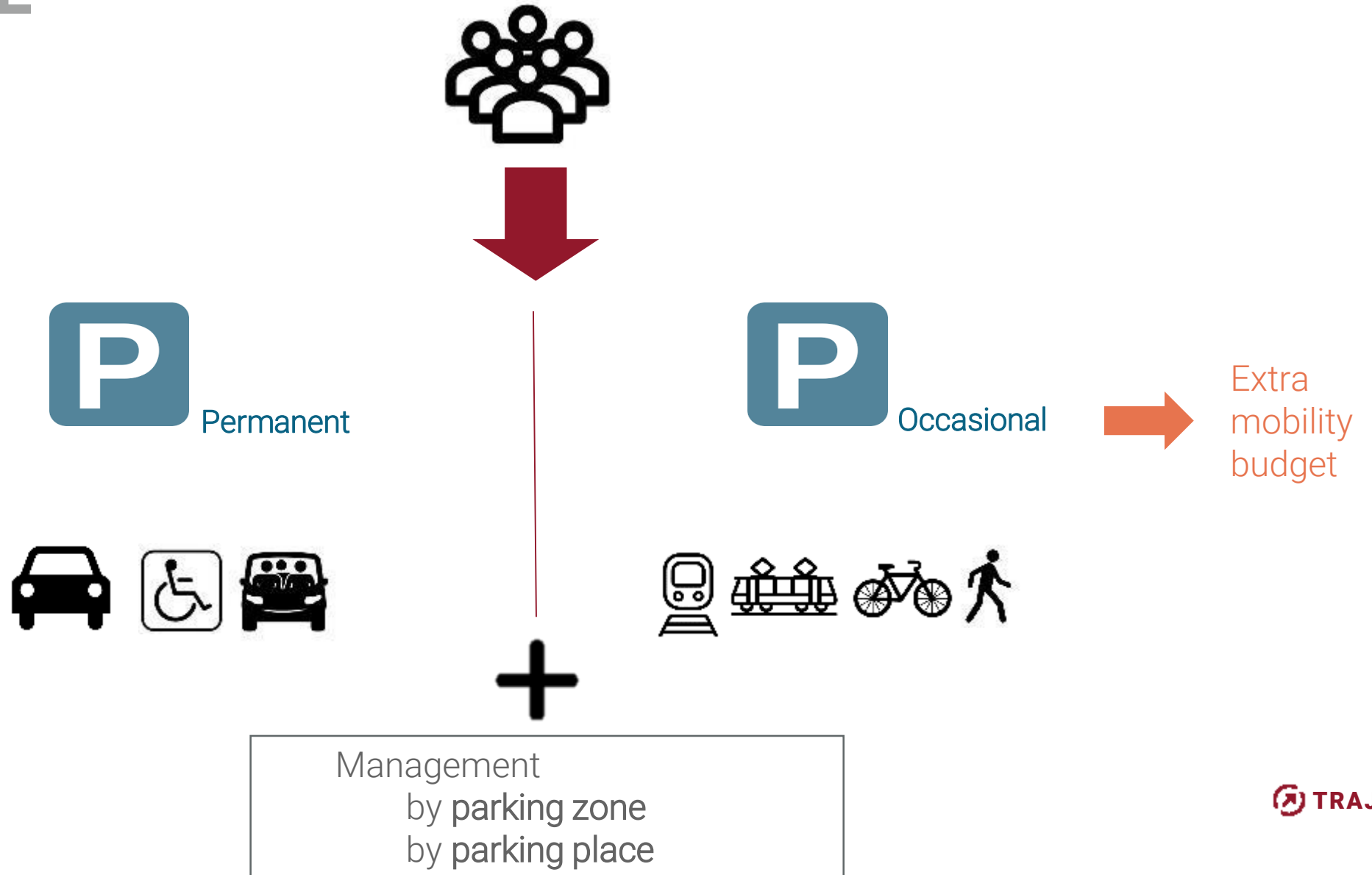


Staff

Depending child – 12 ans	30.000
Person with reduced mobility	100.000



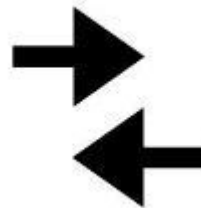
EXAMPLE



OCCASIONAL PARKING MANAGEMENT

DEMAND

- Staff member not having obtained a permanent place of parking
- Staff member with other main mode of transport than car
- Excluded visitors



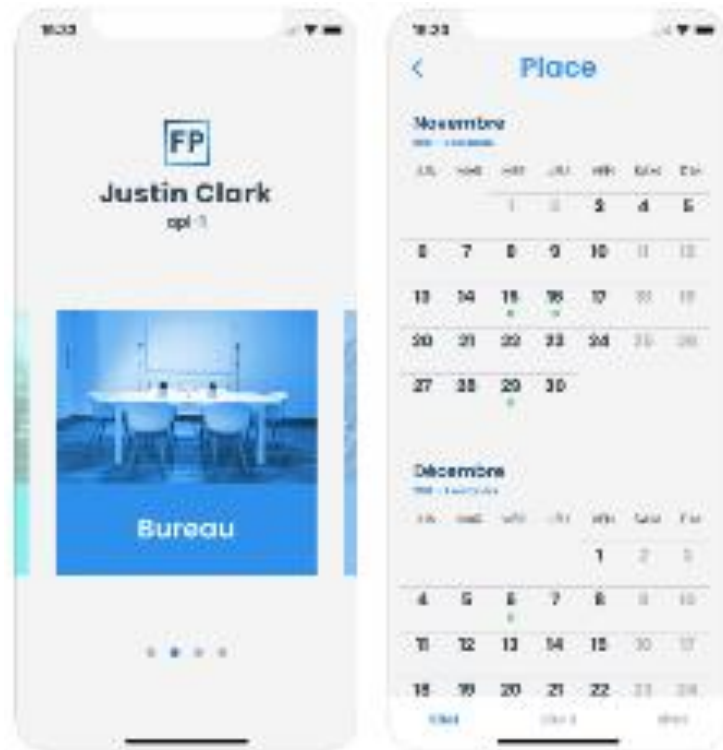
SUPPLY

- Definition of a number of occasional parking spaces
- Permanent and free places
- Employee gets X accesses/month

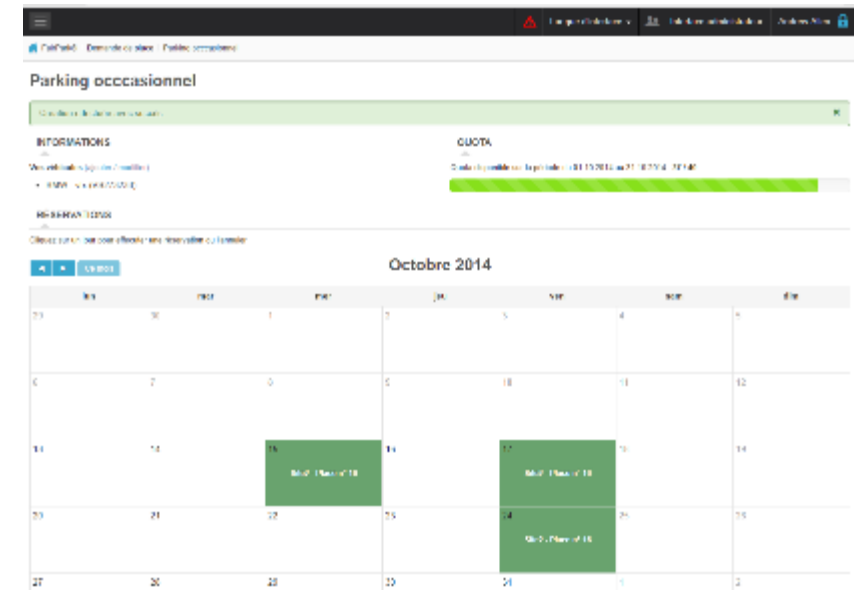


MANAGEMENT OF OCCASIONAL PARKING

APPLICATION



ONLINE TOOL



BENEFITS FOR THE COMPANY & ITS EMPLOYEES

- All transport modes are treated equally
- Less parking spots needed → lower mobility costs
- Employee satisfaction because of clear and fair allocation
- Stimulates changes in behaviour (less demand for parking)

THANK YOU



Freya De Muynck
fdm@traject.be

Emmanuelle Brunetti
ebr@traject.be

[@trajectmobility](#)